

Artist: Joshua Wolf

Character: Flame Princess & Gunter

For more Cubee Designs, go to:  
[theflyingdachshund.deviantart.com](http://theflyingdachshund.deviantart.com)  
 or  
[theflyingdachshund.blogspot.com](http://theflyingdachshund.blogspot.com)

Carefully cut out the shapes on this page.  
 Use a hobby knife to slit the white lines.  
 Tape and glue are not necessary. Thicker paper is recommended.

RIGHT ARM

HEAD

LEGS



template design © 2007  
 Chris Beaumont  
[cubecraft@gmail.com](mailto:cubecraft@gmail.com)  
 awesome toy design by:  
 Josh Wolf

TORSO

LEFT ARM

contact: [cubecraft@gmail.com](mailto:cubecraft@gmail.com)

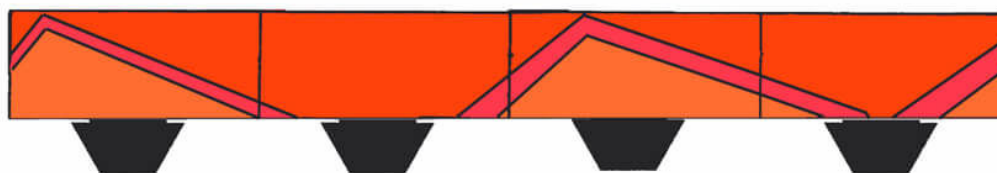
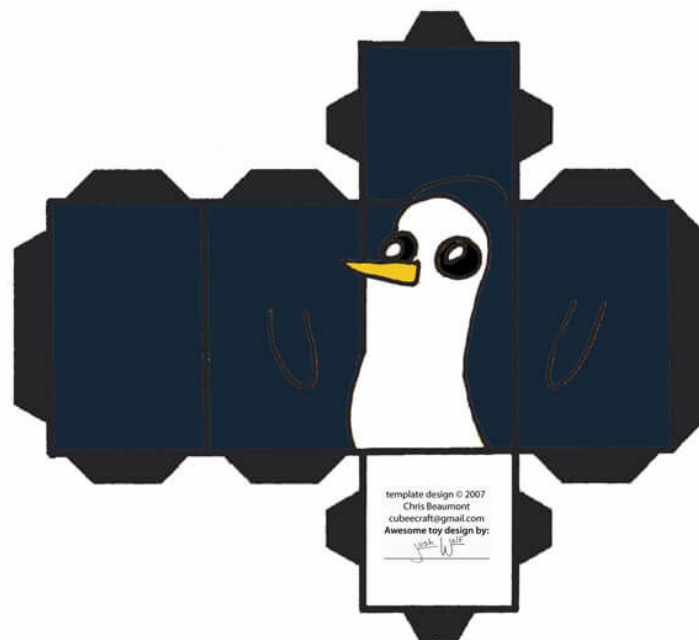
Carefully cut out the shapes on this page.  
Use a hobby knife to slit the white lines.  
Tape and glue are not necessary. Thicker paper is recommended.

CUBEECRAFT®

Artist: Joshua Wolf

Character: Flame Princess & Gunter

For more Cubee Designs, go to:  
[theflyingdachshund.deviantart.com](http://theflyingdachshund.deviantart.com)  
or  
[theflyingdachshund.blogspot.com](http://theflyingdachshund.blogspot.com)



contact: [cubecraft@gmail.com](mailto:cubecraft@gmail.com)

© 2007 Christopher Beaumont All rights reserved. Please visit <http://www.cubecraft.com> for more information.  
This legal line and legal line on template piece must remain intact if you intend to share this design.