

Artist: Joshua WolfCharacter: Horace Horsecollar

For more Cubee Designs, go to:  
[theflyingdachshund.deviantart.com](http://theflyingdachshund.deviantart.com)  
 or  
[theflyingdachshund.blogspot.com](http://theflyingdachshund.blogspot.com)

HEAD

RIGHT ARM

Carefully cut out the  
 shapes on this page.  
 Use a hobby knife to slit  
 the white lines.  
 Tape and glue are not  
 necessary. Thicker paper is  
 recommended.

LEGS

LEFT ARM

contact: [cubecraft@gmail.com](mailto:cubecraft@gmail.com)

Carefully cut out the shapes on this page.  
Use a hobby knife to slit the white lines.  
Tape and glue are not necessary. Thicker paper is recommended.

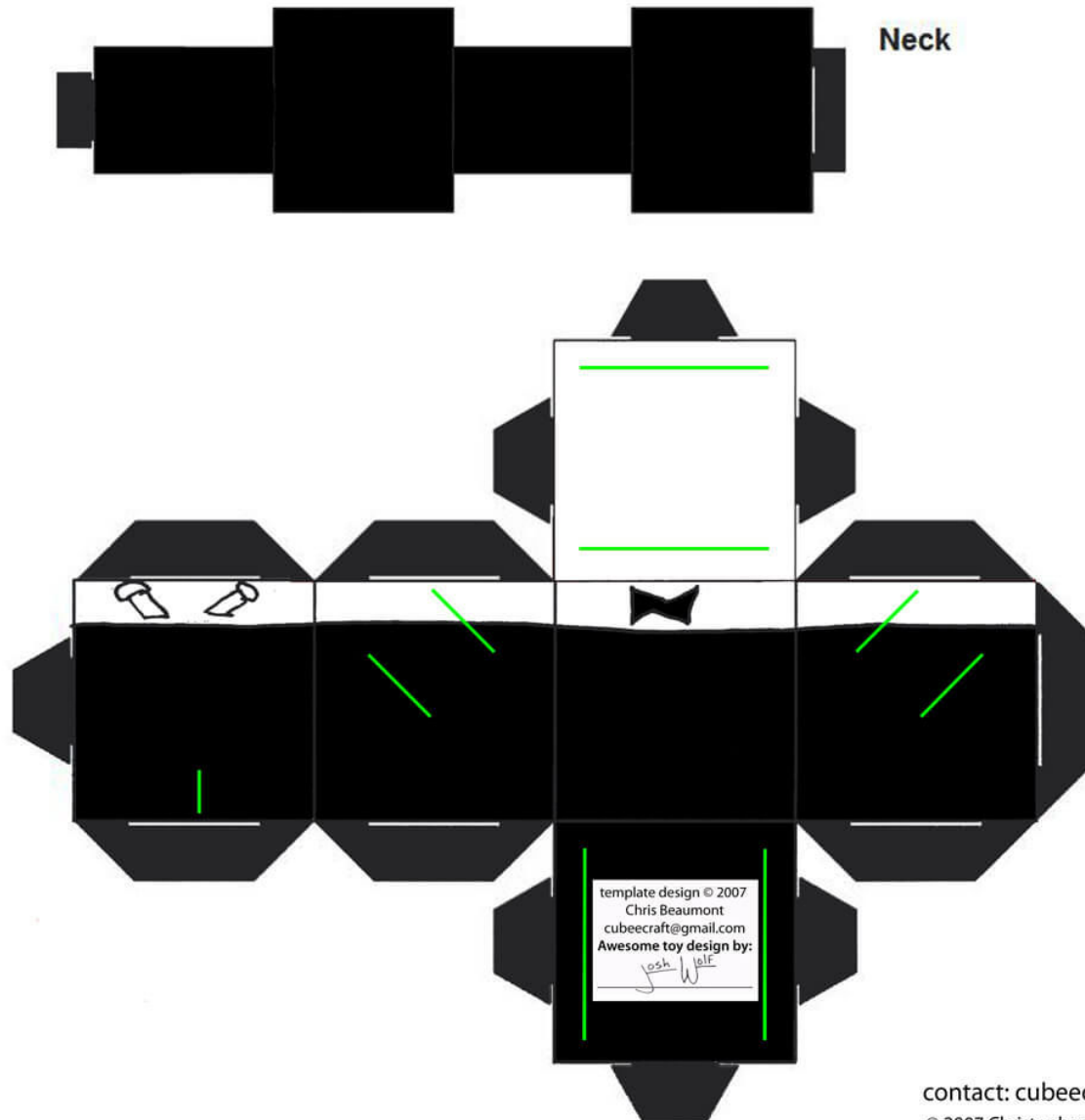
CUBEECRAFT®

Artist: Joshua Wolf

Character: Horace Horsecollar

For more Cubee Designs, go to:  
[theflyingdachshund.deviantart.com](http://theflyingdachshund.deviantart.com)  
or  
[theflyingdachshund.blogspot.com](http://theflyingdachshund.blogspot.com)

Neck



Template designed by:

CyberDrone

template design © 2007  
Chris Beaumont  
[cubecraft@gmail.com](mailto:cubecraft@gmail.com)  
Awesome toy design by:  
*Josh Wolf*



contact: [cubecraft@gmail.com](mailto:cubecraft@gmail.com)

© 2007 Christopher Beaumont All rights reserved. Please visit <http://www.cubecraft.com> for more information.  
This legal line and legal line on template piece must remain intact if you intend to share this design.