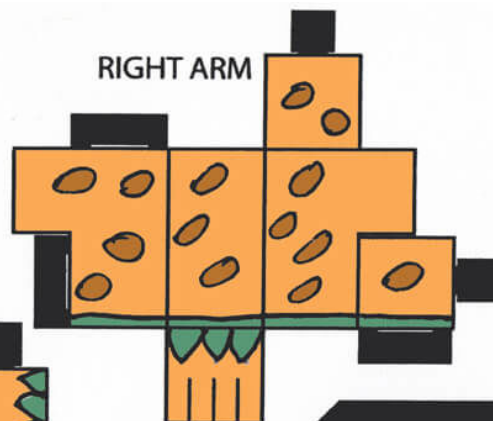




HEAD

Carefully cut out the shapes on this page. Use a hobby knife to slit the white lines. Tape and glue are not necessary. Thicker paper is recommended.

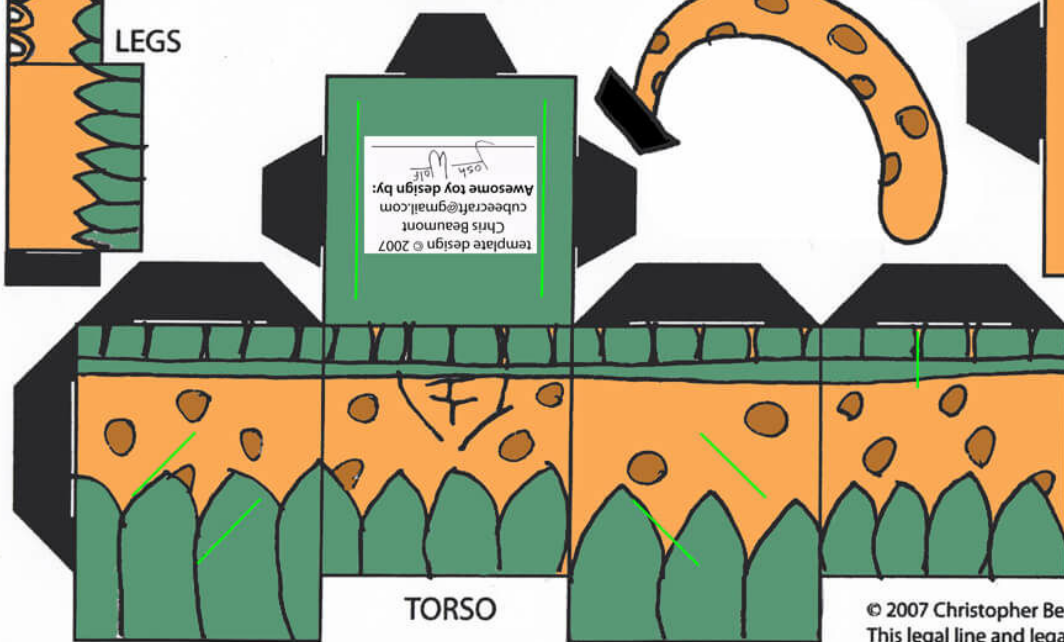
RIGHT ARM



LEGS

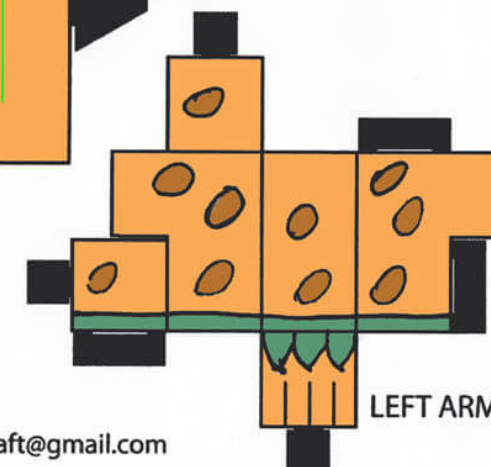


TORSO



For more Cubee Designs, go to:  
[theflyingdachshund.deviantart.com](http://theflyingdachshund.deviantart.com)  
 or  
[theflyingdachshund.blogspot.com](http://theflyingdachshund.blogspot.com)

LEFT ARM



contact: [cubecraft@gmail.com](mailto:cubecraft@gmail.com)